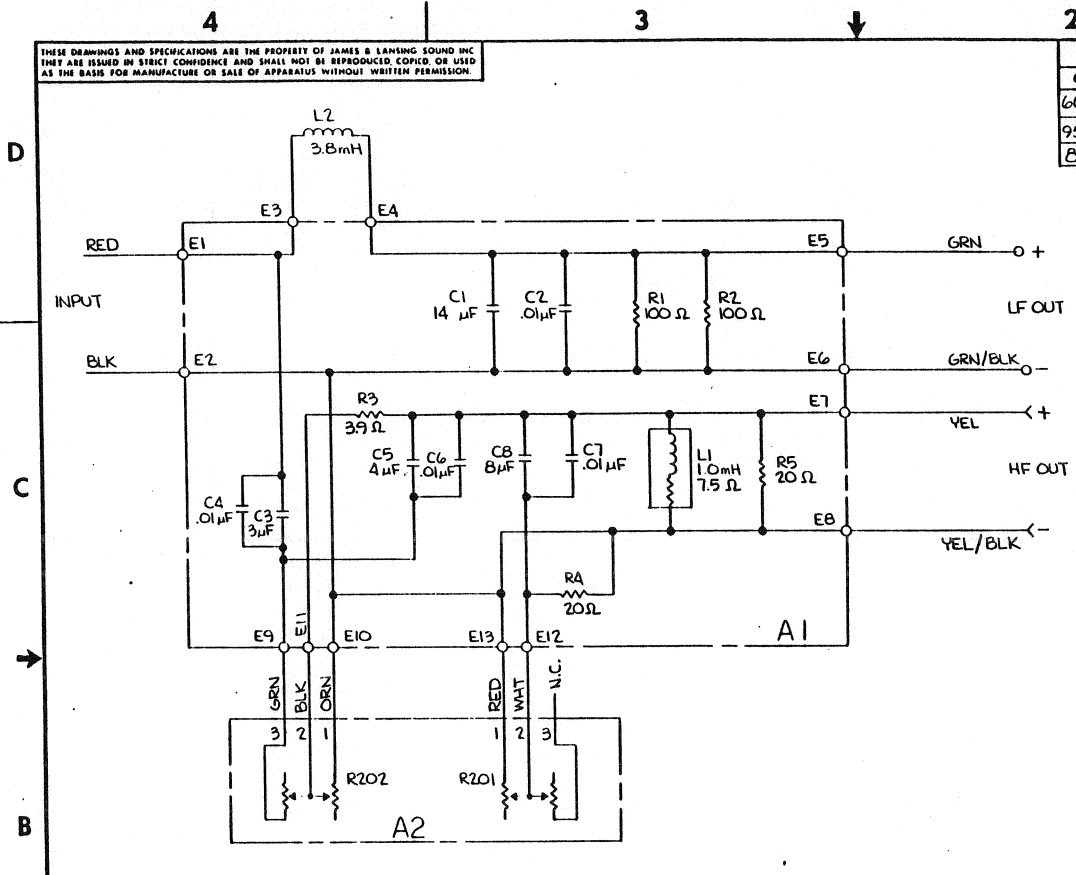


THESE DRAWINGS AND SPECIFICATIONS ARE THE PROPERTY OF JAMES B. LANSING SOUND INC. THEY ARE ISSUED IN STRICT CONFIDENCE AND SHALL NOT BE REPRODUCED, COPIED, OR USED AS THE BASIS FOR MANUFACTURE OR SALE OF APPARATUS WITHOUT WRITTEN PERMISSION.

REVISIONS						
CHG	LTR	DESCRIPTION	DRFT	CHK	DATE	APPR
6666	A	RELEASE FOR PRODUCTION	Blm	Blm	10-5-89	<i>[Signature]</i>
952G	B	MALE \div FEMALE COIN. ON L.F.	M.V.	gy	6-13-85	6.5
805J	C	DEL. CONN. FROM L.F.	G.K.	gy	9-5-87	6.5



65934-01

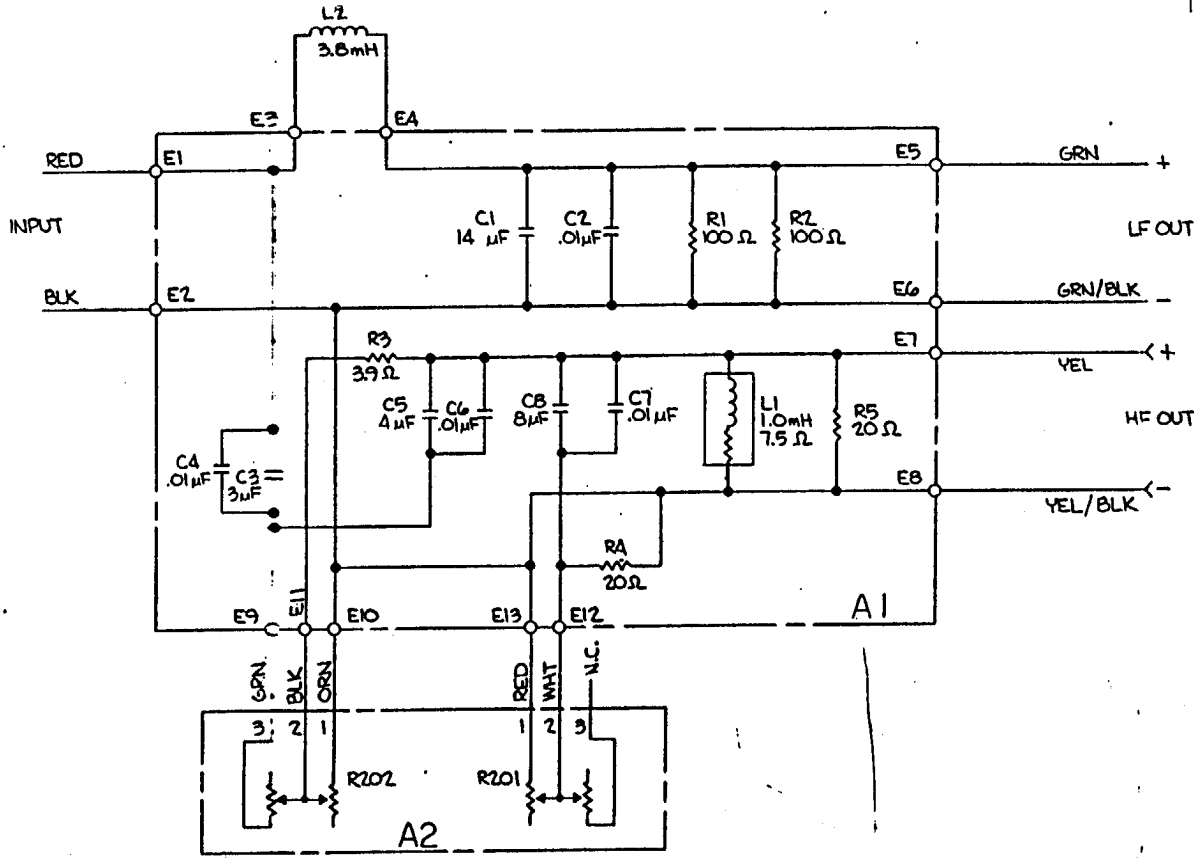
3124

1. RESISTORS ARE WIREWOUND, 10 W, 10% .
 NOTES: (UNLESS OTHERWISE SPECIFIED)

ITEM	PART NO.	DESCRIPTION	QTY	REMARKS
BILL OF MATERIAL				
UNLESS OTHERWISE SPECIFIED DIMENSIONS ARE IN INCH SIZES BREAK SHARP EDGES .016 inch TOLERANCES (UNLESS OTHERWISE SPECIFIED) XXX ± .005 inch XX ± .010 inch X ± .020 inch FRACTIONAL DIMENSIONS ± 1/32 ALL DIMENSIONS ARE FINISHED DIMENSIONS DO NOT SCALE DRAWING		MATERIAL FINISH MODELS USED ON	DRAWN 9-26-89 CHECKED 10-5-89 DESIGNED 10-5-89 APPR 10-5-89 APPR 10-5-89	JBL JAMES B. LANSING SOUND, INC. A Harman International Company Northridge, California 91329 USA TITLE SCHEMATIC, 3124 SIZE C DRAWING NO 65934-01 REV C SCALE SHEET 1 OF 1

THESE DRAWINGS AND SPECIFICATIONS ARE THE PROPERTY OF JAMES B. LANSING SOUND, INC. THEY ARE REPRODUCED IN STRICT CONFIDENCE AND SHALL NOT BE REPRODUCED, COPIED, OR USED AS THE BASIS FOR MANUFACTURE OR SALE OF APPARATUS WITHOUT WRITTEN PERMISSION.

REVISIONS						
CHG	LTR	DESCRIPTION	DRFT	CHK	DATE	APPR
664616	A	RELEASE FOR PRODUCTION			10-24-64	[Signature]



1. RESISTORS ARE WIRE WOUND, 10 W, 10% .
 NOTES: (UNLESS OTHERWISE SPECIFIED)

ITEM	PART NO.	DESCRIPTION	QTY	REMARKS
BILL OF MATERIAL				
UNLESS OTHERWISE SPECIFIED DIMENSIONS ARE IN INCH-SIZES BREAK SHARP EDGES .016 inch		MATERIAL	DRAWN 7-16-64 D. L. [Signature]	JAMES B. LANSING SOUND, INC. A Harman International Company Northridge, California 91329 U.S.A.
TOLERANCES (UNLESS OTHERWISE SPECIFIED) ANGULAR		FINISH	CHECKED 6-6-64 [Signature]	
R.X.X ± .003 inch X.X.X ± .010 inch R.X ± .020 inch		DESIGN	DESIGN 1-18-64 [Signature]	TITLE SCHEMATIC, 3124
FRACTIONAL DIMENSIONS: ± 1/32		MODELS USED ON	ENGR - 10-24-64 [Signature]	SIZE C
ALL DIMENSIONS ARE FINISHED DIMENSIONS DO NOT SCALE DRAWING		APPR	[Signature]	DRAWING NO. 65934-01
			SCALE	REV A
			SHEET	1 of 1

N3124
P9.2

0-7-64-01

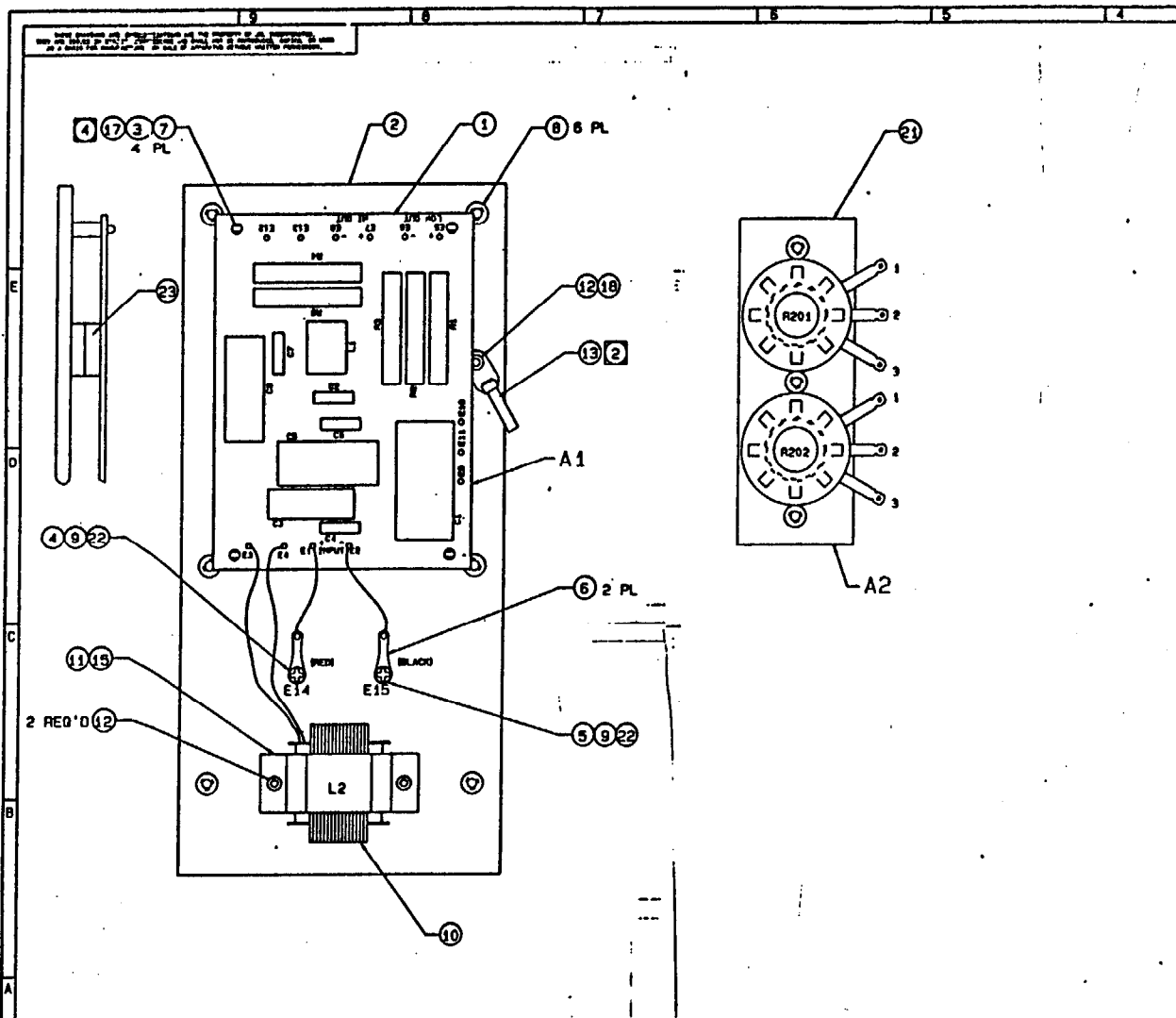
A

REVISIONS						
CRW	REV	DESCRIPTION	DRFT	CHK	DATE	APPR
6666	A	RELEASE FOR PRODUCTION	LIEU		Dec 11, 1964	

N3124

P3.1

FILE COPY



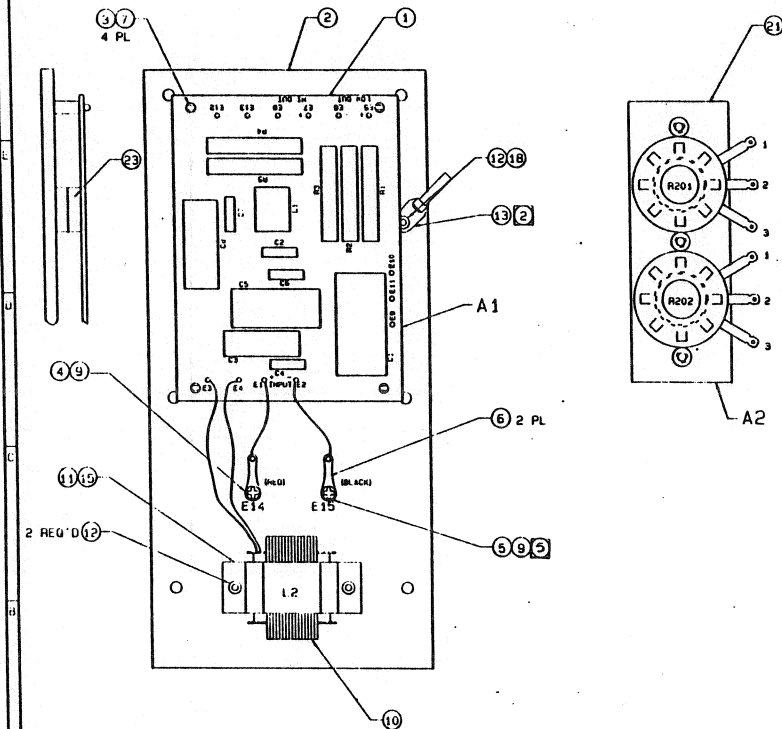
5. CUT ITEM 23 IN HALF; STACK BOTH HALVES AND PLACE BETWEEN PC BOARD AND MOUNTING BOARD, CENTERED.
 4. ADD ADHESIVE (ITEM 17) TO TOP OF STANDOFF (ITEM 3).
 3. TIE WIRES TOGETHER WITH ITEM 14 MID WAY BETWEEN A1 AND A2.
 2. TIE WIRES FROM E5 THRU E13 TO MOUNTING BOARD WITH ITEM 13.
1. SEE DWG 55934-01 FOR SCHEMATIC; SEE DWG 55934-02 FOR WIRE LIST.
- NOTES: (UNLESS OTHERWISE SPECIFIED)

ITEM	PART NO.	DESCRIPTION	QTY	REMARKS
24				
23	61528	VIBRATION PAD	1	CUT IN HALF
22	10049	WASHER, LOCK, EXTERNAL TIGHTENING, NO. 6	2	
21	65937	L-PAD ASSY	1	
20				
19				
18	10251	WASHER, NO. 6	1	
17	65864	ADHESIVE	.01	
16	204365	SOLDER	.005	
15	53010P	FOAM TAPE	0.1	
14	353535	CABLE TIE	1	
13	370235	CABLE CLAMP	1	
12	48110	RIVET	3	
11	56154	INDUCTOR STRAP	1	
10	55029-03R8	INDUCTOR, 3.8 mH	1	
9	10811	SCREW, 6-32 X 3/8 PHN PH	2	
8	51204	THREADED RIVET, 8-32	8	
7	62812	SCREW, 6-32 X 1/2 FLN PH	4	
6	47453	SOLDER LUG	2	
5	33751	BINDING POST, BLACK	1	
4	33750	BINDING POST, RED	1	
3	62751	STANDOFF, P.C. BOARD	4	
2	65936	MOUNTING BOARD	1	
1	65935	PRINTED CIRCUIT BOARD ASSY 3124	1	

BILL OF MATERIAL			
DATE PREPARED	BY	DATE	BY
NOTED		8 LIEU	
TOLERANCES UNLESS OTHERWISE SPECIFIED			
JSL INCORPORATED			
A HARSH INTERNATIONAL COMPANY			
HUNTINGTON, CALIFORNIA 91304, U.S.A.			
TITLE		MFD ITEM, 3124	
REV	DATE	BY	APP
D	65934		A

PART NO.	REV	DESCRIPTION	REMARK
65934	B	MFD ITEM 3124	NAKE IN HOUSE - SEE BOM
65934-0060	A	NETWORK 3124	PURCHASED

REVISIONS						
CHG	REV	DESCRIPTION	DRFT	CHK	DATE	APPR
6666	A	RELEASE FOR PRODUCTION	LIEU	LIEU	0/9/84	DR AY
7856	B	REVISE PER I.M.N.	AJY		11/20/84	
928J	C	RELEASE - SOLD	K.K.		12/17/84	



ITEM	PART NO.	DESCRIPTION	QTY	REMARKS
25				
24				
23	61628	VIBRATION PAD	1	CUT IN HALF
22				
21	65937	L-PAD ASSY	1	
20				
19				
18	10251	WASHER, NO. 6	1	
17				
16	204365	SOLDER	.005	
15	53010P	FOAM TAPE	0.1	
14	353535	CABLE TIE	1	
13	370235	CABLE CLAMP	1	
12	48110	RIVET	3	
11	56194	INDUCTOR STRAP	1	
10	35029-03R6	INDUCTOR, 3.6 mH	1	
9	10811	SCREW, 6-32 X 3/8 PH PH	2	
8	65684	JET MELT	1	
7	62812	SCREW, 6-32 X 1/2 FLH PH	4	
6	61655	SOLDER LUG	2	
5	33751	BINDING POST, BK ACK	1	
4	33750	BINDING POST, RED	1	
3	62751	STANDOFF, P.C. BOARD	4	
2	65936	MOUNTING BOARD	1	
1	65935	PRINTED CIRCUIT BOARD ASSY, 3124	1	

3124

5-WAY BINDING POST ACCEPTABLE ON PURCHASED PART.

- CUT ITEM 23 IN HALF; STACK BOTH HALVES AND PLACE BETWEEN PC BOARD AND MOUNTING BOARD, CENTERED.
 - TIE WIRES TOGETHER WITH ITEM 14 MID WAY BETWEEN A1 AND A2.
 - TIE WIRES FROM E5 THRU E13 TO MOUNTING BOARD WITH ITEM 13.
 - SEE DWG 65934-01 FOR SCHEMATIC; SEE DWG 65934-02 FOR WIRE LIST.
- NOTES: UNLESS OTHERWISE SPECIFIED

BILL OF MATERIAL		NOTED	
MATERIALS	65934	DATE	4/25/84
REVISION	B	BY	J. RIVERA
DESCRIPTION	MFD ITEM, 3124	DATE	12/17/84
QUANTITY	1	BY	K.K.
REMARKS		DATE	12/17/84
APPROVED		DATE	12/17/84